

## Key Vocabulary

|                      |  |
|----------------------|--|
| <b>endangered</b>    | A species of animal or plant that is at risk of becoming extinct (no longer existing).             |
| <b>game reserve</b>  | A protected area of land where humans are allowed to live and carry out some different activities. |
| <b>habitat</b>       | The natural home of a plant or animal.   |
| <b>migration</b>     | When animals move from one area to another, often to find food, water or shelter.                  |
| <b>national park</b> | A protected area of land where only tourism and research is allowed. No humans live there.         |
| <b>rural</b>         | Areas away from towns or cities, also known as the countryside.                                    |
| <b>savannah</b>      | Tropical grasslands with shrubs and trees but not much rainfall.                                   |
| <b>tourists</b>      | People who travel for fun.   |

## Where is Kenya?

- Located in east Africa.
- Population of around 44 million.
- The capital city is Nairobi.
- Mombasa, situated on the coast, is one of Kenya's largest cities.
- The Tana river is the longest river in Kenya.
- Mount Kenya is the highest mountain (5200m).
- Kenya's coastline is on the Indian Ocean.
- Swahili and English are the official languages.



## Weather and Climate

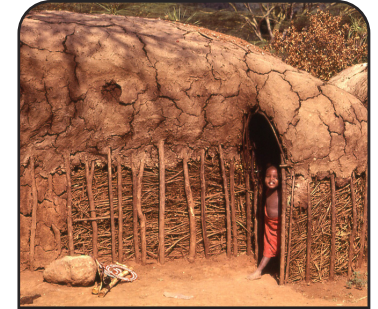
|                                |  |
|--------------------------------|--|
| Kenya lies on the equator.     | Climate is hot, sunny and dry for most of the year.              |
| Hot, dry deserts in the north. | Hot and humid in the west.                                       |
| The highlands are cool.        | Mount Kenya is high enough to be covered in snow all year round. |

## National Parks and Reserves

- There are over 50 **national parks** and **game reserves**.
- They include different types of wildlife and **habitats**, including wetlands, grasslands, forest and **savannah**.
- The Maasai Mara National Reserve is one of the most popular reserves for **tourists** to visit.
- Millions of **tourists** visit the famous reserve to go on safari, explore the landscape and to see the amazing wildlife, including the 'Big Five'.
- Each year visitors come to watch the huge **migration** of wildebeest.
- Some animals in Kenya are **endangered** and are protected within the parks and reserves.

## The Maasai Tribe

- Maasai people traditionally live in mud huts made from mud, sticks, grass and cow dung.
- Many Maasai are farmers and own large herds of cows, goats and sheep.
- The Maasai people love music and dance. They often sing and the men perform a special jumping dance.



Traditional mud hut.

## School Life in Kenya

- Most children in Kenya go to school, but not all of them.
- Some children, especially in **rural** areas, are too busy helping their families by working on the farm, cooking or fetching water.
- At school, some children may be different ages but in the same year group.



Maasai Tribe.

## The Big Five - the largest and most dangerous African animals



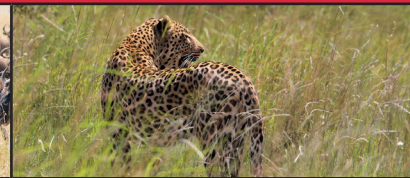
African lion



African elephant



Cape buffalo



African leopard



White/black rhinoceros

[Maasai houses, Kenya](#) by Bulkr, [Masai Mara Tribe Men](#) by The Dilly Lama, [Leopard Large Cat](#) by Nel Botha is licensed under [CC BY 2.0](#)