



MARSH GIBBON
— CE SCHOOL —

Newsletter

Dear Parents, Carers, Staff and Governors

We've had a busy few weeks with some notable highlights which have included: Bikeability, World Book Day, Comic Relief, Science Week and a visit for our Year 5 and Year 6 classes to Woburn Safari Park.

This week our younger children have shared their Fire! Fire! learning with their parents. Next week, the children will learn all about Easter with a 'Godly Play' session on Monday and then our Easter Service down at the church on Tuesday afternoon.

As this will be the last newsletter before the end of term, on behalf of all the staff we would all like to wish you a very blessed Easter.

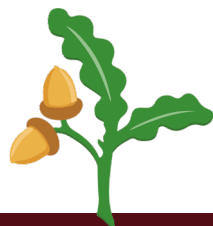
Mrs B Brown
Headteacher
office@marshgibbon.bucks.sch.uk



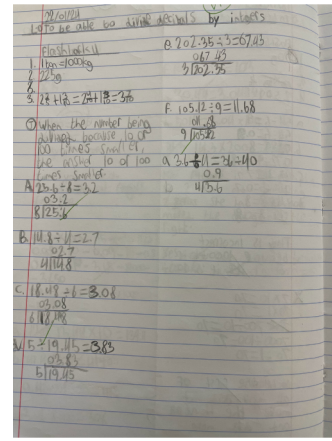
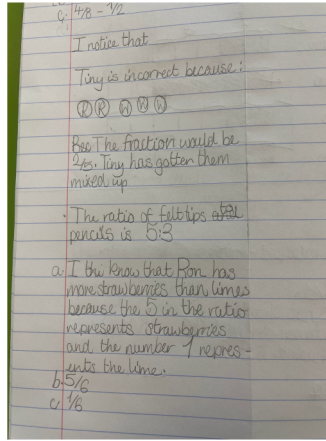
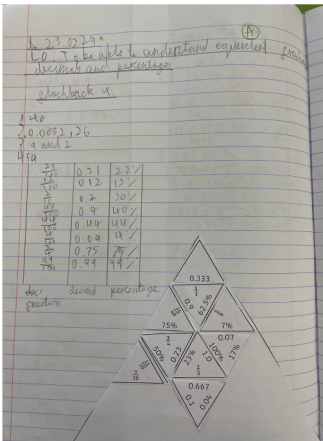
WORLD BOOK DAY

What a wonderful time we all had during our World Book Week! This year, the children enjoyed "The Jolly Postman" by Janet and Allan Ahlberg. Each year group then had a writing outcome which was based on the story. The children worked really hard and some of their writing is on display in the Hall.

During the week, adults from the school visited different year groups to share their favourite stories. Teachers, TA's and Office staff all got involved; the verdict from the children was that they loved it! There were whoops and cheers as adults the children don't normally have in their class walked in with a story to share. It really was wonderful. Our World Book Week wouldn't be complete without the fabulous costumes we saw on World Book Day. The children enjoyed lots of reading and book related activities. Make sure you use your £1 Book Token at a participating store.



MATHS



The children across the school have all been busy working hard in Maths this term. In KS2, the children have had a focus on fractions, decimals and percentages whilst EYFS and KS1 are continuing to secure their place value knowledge as well as their measuring skills. As you can see the children have all been applying themselves well - keep up the hard work everybody!

The children were very positive about their Maths learning during our recent pupil voice too:

Learning about Fractions is fun!

Maths helps you in real life so you don't spend too much money in the shops!

'Maths is hard but you just have to keep trying'

Remember to use the word 'YET' when you don't understand

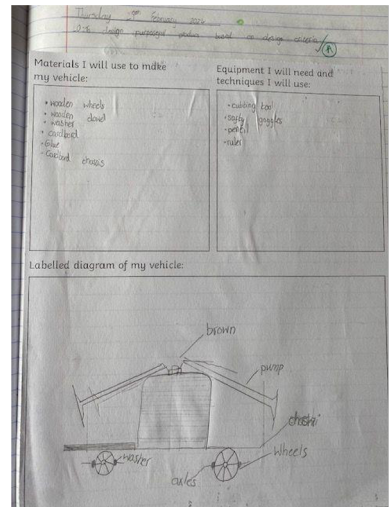
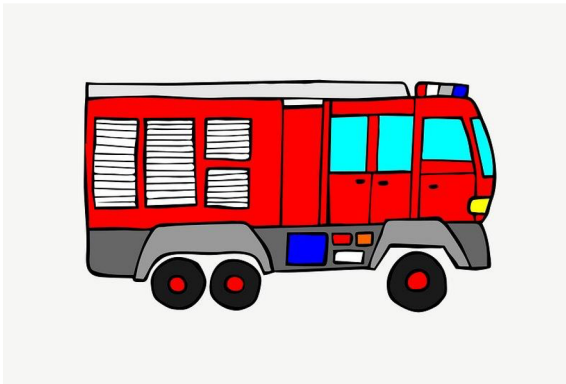
Sometimes our work can be hard but then the next day it gets a bit easier and easier



DESIGN TECHNOLOGY



Having learnt all about the importance of the fire service in their Fire! Fire! topic, Year 1 and 2 have been busy designing their fire engines using wheels and axles.



In Year 3 and 4, the children have been using their knowledge of levers and linkages to design moving rainforest animals.



SCHOOL COUNCIL

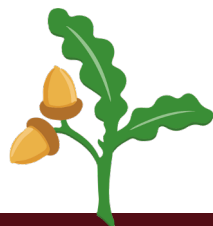
COMIC RELIEF

The School Council decided to raise money for Comic Relief on Friday 15th March. Prior to this, the children led an assembly to explain the differences that donations make to the lives of others, both in the U.K. and overseas. It was great to see so many children wearing red and supporting this worthy cause in school. Thank you for your support.



£212

raised of £150 target
by 31 supporters



BIKEABILITY

A huge well done to the children who took part in, and passed Bikeability Level 1. They had great fun and learnt lots! A big thank you to their instructor, Dan! Here's what some of the children had to say about the experience:



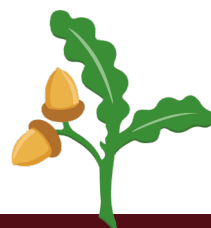
Wilfred: It was really good because I learnt lots, like how to put my hand out safely if I am on the road so that cars will know where I am going.

Bella: It was fun because I loved riding my bike on the school playground! I liked riding with one hand. We did this so we could practice signaling for when we go on the road.



Stanley: It was so fun! There were cones with baby hedgehogs underneath them so we had to stay clear.

Luckily, the one I accidentally went over had a baby hedgehog missing!



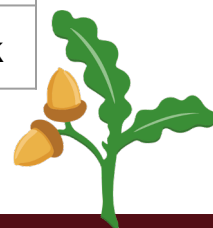
FOOTBALL



Well done to the boys that played against Grendon as well as the boys and girls who played against Twyford in the last few weeks. The children have trained hard and played very well together. Unfortunately, due to the weather, the children have had a few matches postponed which now means we are very busy for the next few weeks!

Upcoming fixtures

19/03	Girls away Vs. St Edburgs
21/03	Girls home Vs. St Mary's
25/3	Mixed away Vs. Glory Farm
26/03	Boys away Vs. Bure Park



YEAR 6 LEAVERS

Our Year 6 pupils will now have received their secondary school allocations. There is a wealth of support available for those who may be nervous for what awaits.



We offer FREE online courses for secondary school aged young people starting the week beginning 15 April 2024. More information about these courses including booking details can be found here: [Help for young people in Buckinghamshire | Family Information Service](#). The closing date for booking is 1 April 2024.

Virtual How to Build Confidence and Self-Esteem Course for young people

This course aims to help young people build resilience by looking at coping with setbacks, how to deal with peer pressure, how to feel better about ourselves and body image.

- It is open to young people aged 11-19 years old (up to 25 with SEND)
- It will run for one hour a week over five weeks on Mondays 6-7pm.
- The course will take place virtually on MS Teams and starts Monday 15 April

Bucks Family Learning also offer courses for parent/carers which complement our youth courses. They run courses on:

- Helping your child build confidence and resilience
- Helping your child deal with Stress and Anxiety
- Helping your child build Positive friendships and manage peer pressure
- Supporting Your Child's Transition to Secondary School

More information including dates and booking details can be found here:

[Family Learning Archives - Buckinghamshire Adult Learning \(adultlearningbc.ac.uk\)](#)



What Parents & Educators Need to Know about TEKKEN 8

WHAT ARE THE RISKS?

Thirty years after its debut on the original PlayStation, the Tekken franchise is back with its eighth mainstream instalment. A one-on-one fighting game series in the same vein as Street Fighter and Mortal Kombat, Tekken 8 can be commended for its relative lack of in-game purchases – but there's still plenty to consider in keeping young players safe from potential hazards.

AGE RESTRICTION
PEGI
16

FUTURE SPENDING?

Tekken 8 carries a PEGI 16 rating, with the assessors noting its violence, occasional profanity and in-game purchase options. The latter issue, however, is a little different to what you may expect from a modern game: unlike many high-profile releases, Tekken 8's content is all accessible without spending any extra money. The exceptions are new characters, which will become available to purchase separately in the future.

COPYCAT RISK

With characters flying across the screen using a mixture of authentic and fantastical fighting styles, younger children and impressionable teens may find themselves tempted to copy their favourite characters or act out their epic fights in real life. This could simply amount to harmless fun – but could also easily lead to accidents, injury and distress if young gamers start actually landing blows.

VIOLENT GAMEPLAY

As a fighting game, Tekken 8's gameplay is heavily based on punching, kicking and throwing opponents around – while some characters' attacks occasionally involve weapons. Most of the violence is comparatively cartoonish in its execution and lacking in gore, but the fact remains that the action still revolves entirely around intense combat and inflicting damage on an opponent.

FAMILY CONFLICT

Tekken 8's story mode, 'The Dark Awakens', focuses on two of the series' most important characters – Kazuya and Jin, a father and son who have been warring for years. The sight of two family members physically fighting each other may be hard to understand (and difficult to deal with) for some children – causing confusion and concern over why relatives would want to hurt one another.

RANKED ONLINE PLAY

Tekken 8 features an array of online modes – most notably its 'Ranked' section, where players battle to reach the top spot of a worldwide leaderboard. Many players will dedicate significant amounts of time to practising and – while the challenge can be fun – some of these matches can get extremely competitive. Children could become obsessed with climbing the rankings and dedicate an unhealthy amount of time to the game or grow angry if they wind up on a losing streak.

ONLINE CONTACT

Tekken 8 doesn't offer voice chat by default, but a player's platform ID is visible (such as their PlayStation Network ID, Steam account or Xbox gamertag). Rival players can, therefore, reach out via messages if they wish. Given the game's fiercely competitive nature, these communications can potentially put children at risk of online abuse if their opponent is a particularly sore loser.

Advice for Parents & Educators

TRY IT OUT YOURSELF

As with many popular games, we'd recommend checking it out for yourself in advance if you have any concerns. In the case of Tekken 8, there's a free demo version available (for all platforms) which lets you experience fights with a handful of the characters: a useful way of establishing first-hand whether some children might find the game's violence to be too intense.

EXERCISE YOUR JUDGEMENT

While Tekken 8 features a sort of 'spray' impact effect when attacks land, it's not the kind of game that most observers would describe as gory (unlike, for instance, the Mortal Kombat franchise). Of course, any fighting game worthy of the name will include a significant degree of violence – but the level at which the battles in Tekken are pitched may not be an issue for some children.

MARTIAL ARTS MOTIVATION?

With characters utilising real-world fighting styles such as jiu-jitsu, boxing and kickboxing, Tekken could represent an opportunity to channel a child's fondness for the game into a beneficial interest in real-world martial arts. Classes can help to build young people's confidence and physical fitness, as well as providing avenues for making new friends.

CONTROL COMMUNICATIONS

If a child plays Tekken online with anyone apart from their friends, then parents and carers could consider restricting communications – such as shutting off the facility to be messaged by other players (although the child's profile name will still be displayed) – to reduce the chance of contact from strangers. This can be done via the console's account settings or through the child's Steam account (if playing on PC).

Meet Our Expert

Editor in Chief of gaming and esports site GGRecon, Lloyd Coombes has worked in the games media industry for five years. He's played every Tekken title since the series began and, as a parent, also values the importance of online safety. Writing mainly about tech and fitness, his articles have been published on influential sites including IGN and TechRadar.



#WakeUpWednesday

The National College

ATTENDANCE



ATTENDANCE WHY IS IT IMPORTANT?



EVERY SCHOOL
DAY COUNTS!

Children are required by law to attend 190 school days per year. The Government states that every pupil's attendance should be at least 95%.

HOW DO YOU MEASURE UP?

Attendance	Days Absent	Weeks Absent	Lessons Missed
95%	9 Days	2 Weeks	50 Lessons
90%	19 Days	4 Weeks	100 lessons
85%	29 Days	6 Weeks	150 lessons
80%	38 Days	8 Weeks	200 lessons
75%	48 Days	10 Weeks	250 lessons
70%	57 Days	11.5 Weeks	290 lessons
65%	67 Days	13.5 Weeks	340 lessons

89% and below
Drastic effect on
academic achievement



95% - 90%
Cause for concern



100% - 96%
Excellent

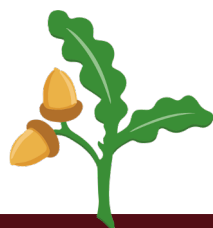


Did you know:

If your child attends school between 95% and 100%, they have the potential to achieve their best, educationally and socially.

Don't underestimate the importance of 100 percent attendance. Even one day missed can have an effect on learning:

- 98% attendance means four school days missed
- 95% attendance means 10 school days missed
- 90% attendance means 19 school days missed
- 80% attendance means 38 school days missed
- Five minutes late each day means three school days missed Please help us promote good attendance throughout our school – you really do play an important role.



PARKING

Safety tips for parking outside schools

When picking up or dropping off children at school, you should do the following:

- Allow yourself plenty of time as the area is likely to be busy
- Do not park on yellow zigzag lines and avoid parking opposite them

If you park further away, please be considerate of local residents and avoid blocking driveways or accessways. Pick-up and drop-off times are busy outside schools. This can cause an increased safety risk to both children and parents.

Parking restrictions outside schools are there to keep you and your children safe. Parking inconsiderately can put people in danger and you also risk being fined. It's important that motorists follow the [Highway Code](#).

Please note:

We have been advised that the parking spaces in front of the shop, opposite the school, are for shop customers only. There are no disabled parking bays.

The shop owners own the parking spaces in front of the shop and we would ask that these spaces be left for the shop customers.



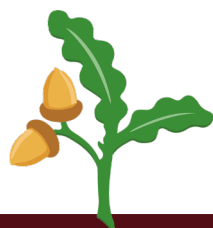
HOME LEARNING GALLERY



Our children have all worked extremely hard with their home learning tasks. Some children have even managed to complete all six! We look forward to welcoming you to our next Home Learning Gallery on Wednesday 27th March at 2:45pm.

EASTER CHURCH SERVICE

We have an Easter Collective Worship Service which is to be held down at St. Mary's Church on the afternoon of Tuesday 26th March at 2pm. Parents are kindly welcome to join us for the service. Some of our Year Six children will be reading scripture and our school choir will lead us with a song, too.



WELCOME

We are pleased to welcome Mrs Whicker who has joined our Teaching Assistant team here at Marsh Gibbon.

We are also pleased to welcome Miss Coker in Y2. Miss Coker is in her final year of her teacher training degree at Oxford Brookes University and will be with us until May 24th.



Welcome

PTA

We would like to thank the PTA for raising more to buy us an events flag. The flag is much taller than our youngest children in the school.



Thank

You

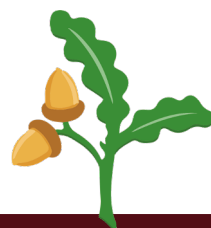


ATTENDANCE TED

Well done Year 6 for this week's best attendance!



EYFS/Y1	90%
Year 2	83.6%
Year 3	95.6%
Year 4	90.5%
Year 5	91.9%
Year 6	98.5%



VALUE BANDS

Year Group	Love	Friendship	Compassion	Honesty	Forgiveness	Respect
EYFS/Y1				MARTHA		
Y2	JACK	GEORGE			CAMERON HOLLY	
Y3	HARRY	TED BRODIE EMMA MONTY				
Y4			BELLA LUCY			
Y5						
Y6	SHYLA WILLOW	EMILY-ROSE VERITY	BEN	LOLITA ISLA		JEMIMA IMOGEN





TIMES TABLES ROCKSTARS



Who will be the next top three players?

House / Av Answer

ASH

626

BEECH

1054

MAPLE

620

WILLOW

325

Y1

21%
active play

HS 169

Y2

68%
active play

JY 827

Y3

24%
active play

GB 163

Y4

95%
active play

JC 486

Y5

32%
active play

KP 1031

Y6

95%
active play

AL 849

Most Correct Answers

A huge well done to our children for their super commitment over the last two weeks by completing their TTRS. Beech house are the top scorers over the last two weeks.

A huge well done to our top three scorers, KP in Y5, AL in Y6 and JY in Y2. The top three players over the last 14 days



DIARY DATES



- 18/03 YR 5&6 Trip
- 20/03 R 1 & 2 assembly to parents 09:15
- 20/03 Mufti day for PTA
- 26/03 Easter Service at the church
- 26/03 YR 3&4 Basketball festival
- 26/03 Boys Football VS. Bure Park
- 27/03 Home learning Gallery 2:45pm
- 28/03 Inset Day

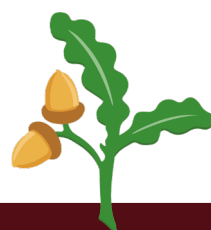


- 15/04 Return to school
- 15/04 3&4 Stone Age day
- 19/04 Stay and play
- 25/04 5&6 Hockey Festival



- 02/05 yr 1&2 racket ball festival
- 07/05 yr 3&4 dodgeball festival
- 09/05 Class photos
- w/c 13/05 yr 6 SAT's week
- w/c 13/05 Mental Health Awareness Week
- 14/05 yr 5&6 Tennis festival
- 17/05 Stay & play
- 21/05 yr 3&4 cricket festival
- 23/05 Royal Latin science festival
- 24/5 Home Learning Gallery
- 24/5 last day of term

- 03/06 Inset day
- 04/06 return to school



Celebration Certificate



EYFS Y1

AMELIA, JACK M.,
CLARA. THEO

Y2

GEORGE, EVIE,
APOLLINE, MILLIE

Y3

MASON, BROOKE,
MOLLY, TED

Y4

STANLEY, ELSIE S-L,
CHLOE, MAISIE

Y5

GEORGINA, JACOB,
MARISA

Y6

LUCAS, WILLOW,
OLIVIA, KEIRA

HOUSE POINTS

	Last week	W/C 04.03	Overall total
Ash	96	220	575
Beech	87	194	544
Maple	78	176	475
Willow	100	184	566

Well done to Ash House who take the lead.

Congratulations ASH House !



